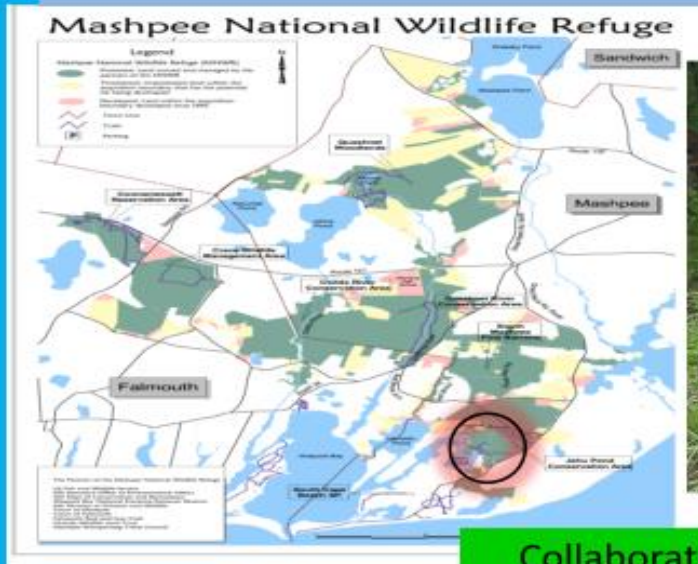


Abigail Brook Restoration Project



Collaborative Work: USFWS carried out stream work & foot bridge, WBNERR built bridge, Mashpee DPW placed boulders

Abigail Brook is a small, tidal stream that enters Jehu Pond on its northern shore. Near Jehu Pond, it crosses an ancient cart way that proved access to the salt marsh hayfields that began here, winding through Falmouth, Mashpee and ending in Sandwich. In this area, the stream and associated wetlands are part of an abandoned cranberry bog; native cattails were replaced by an invasive plant called phragmites. These plants have filled in the stream and severely restricted the exchange and flow between fresh water and brackish water causing little access for fish or crabs. An undersized culvert collapsed from illegal access of ATV's and motor vehicle being driven across the stream. Numerous problems were accumulating and needed to be addressed. These Impairments are:

- Tidal Restriction
- Obstructions/loss of connectivity
- Invasive species
- Channel straightening
- Disconnected floodplains
- Fish run potential (Fells Pond)

Working collaboratively, the refuge partners along with the Mashpee Fire Chief, devised a restoration stream plan that allowed emergency access for fire or

medical needs while limiting vehicle access. USFWS took the lead on the in-stream restoration and initial footbridge foundation. Once the stream work had finished, Mashpee DPW installed large boulders lining both stream banks, Mosquito Control cleared out the phragmites, and Waquoit Bay National Estuarine Research Reserve (WBNERR) constructed a footbridge to allow full access across the stream and continuation along the old cart way path. Currently, ongoing work to revegetate the bog areas and control the phragmites is being carried out. The Abigail brook is now free-flowing; there are no restrictions to the many aquatic organisms which can be observed from the foot bridge. This work provides wonderful access from Great Hay Road off of Red Brook Road to enjoy a delightful walk with splendid views of Jehu Pond and the solitude of the woods.

