



*Friends of*  
**Mashpee National Wildlife Refuge**

Annual Meeting  
February 1, 2022

# AGENDA

- Friends Overview
- Friends Updates
- Budget/Treasurer's Report
- Membership Report
- Election of New Officers
- Goals for Next Year

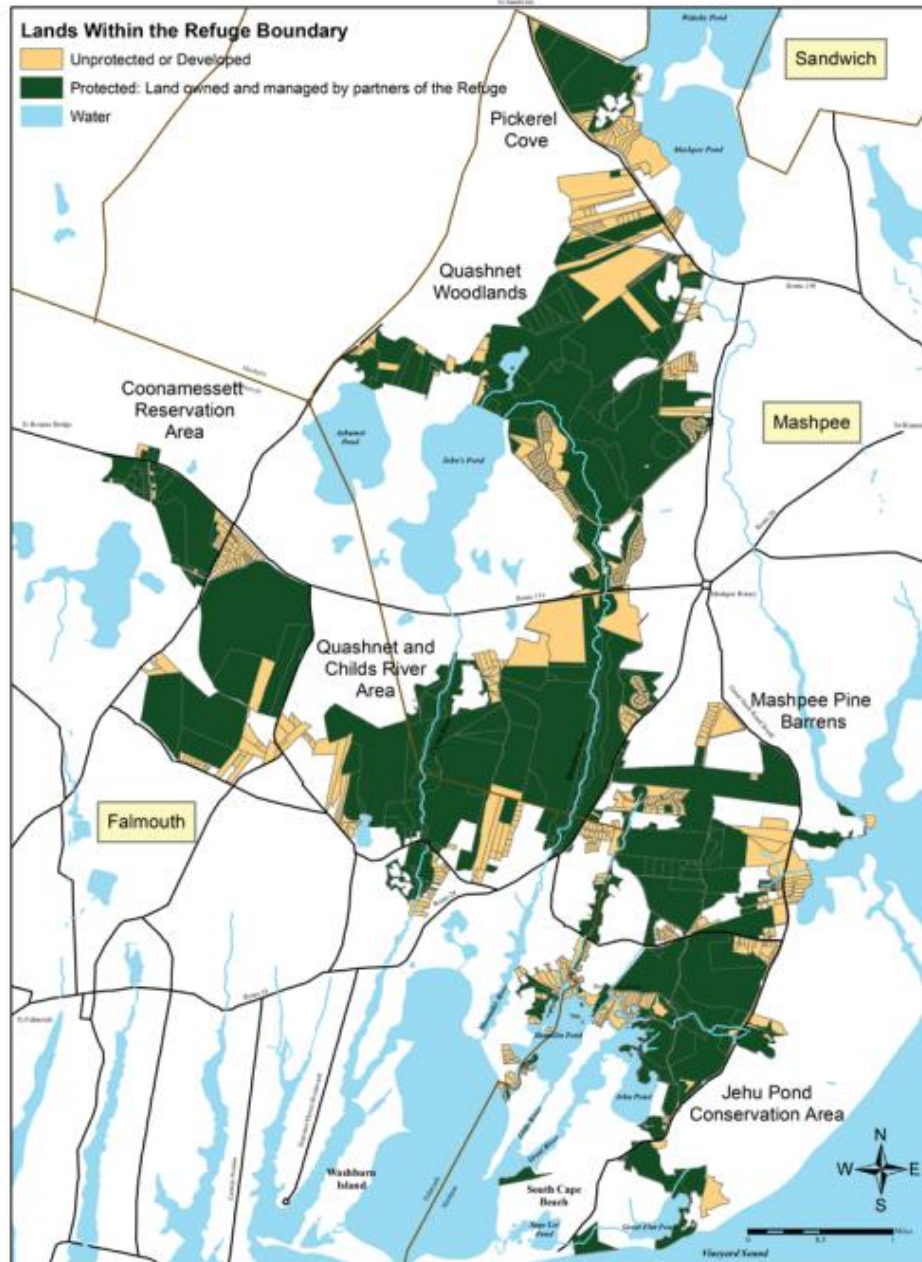
# Friends of Mashpee National Wildlife Refuge



*The mission of the Friends of Mashpee National Wildlife Refuge (MNWR) is to ensure long-term protection and enhancement of native wildlife and habitats, to support MNWR Refuge Partners management efforts, and to promote advocacy, education, conservation, and [recreational opportunities](#) within the Mashpee Refuge. We support [native pollinators](#) through education, sponsoring workshops and creating pollinator gardens in the Mashpee Refuge and with other conservation partners.*



## Mashpee National Wildlife Refuge

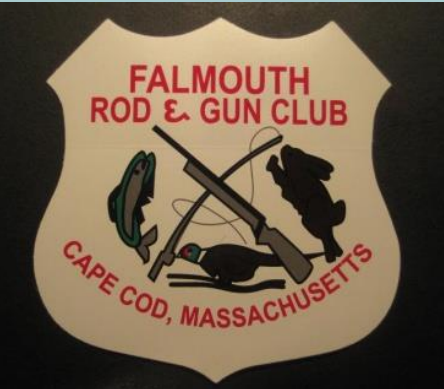


- 1995
- Over 5,800 acres
- Named after the Mashpee Wampanoag Tribe, People of the First Light
- Falmouth and Mashpee
- Largest accessible, open space on the Upper Cape; Cape-wide it is second to the National Seashore!
- Unique in National Refuge System

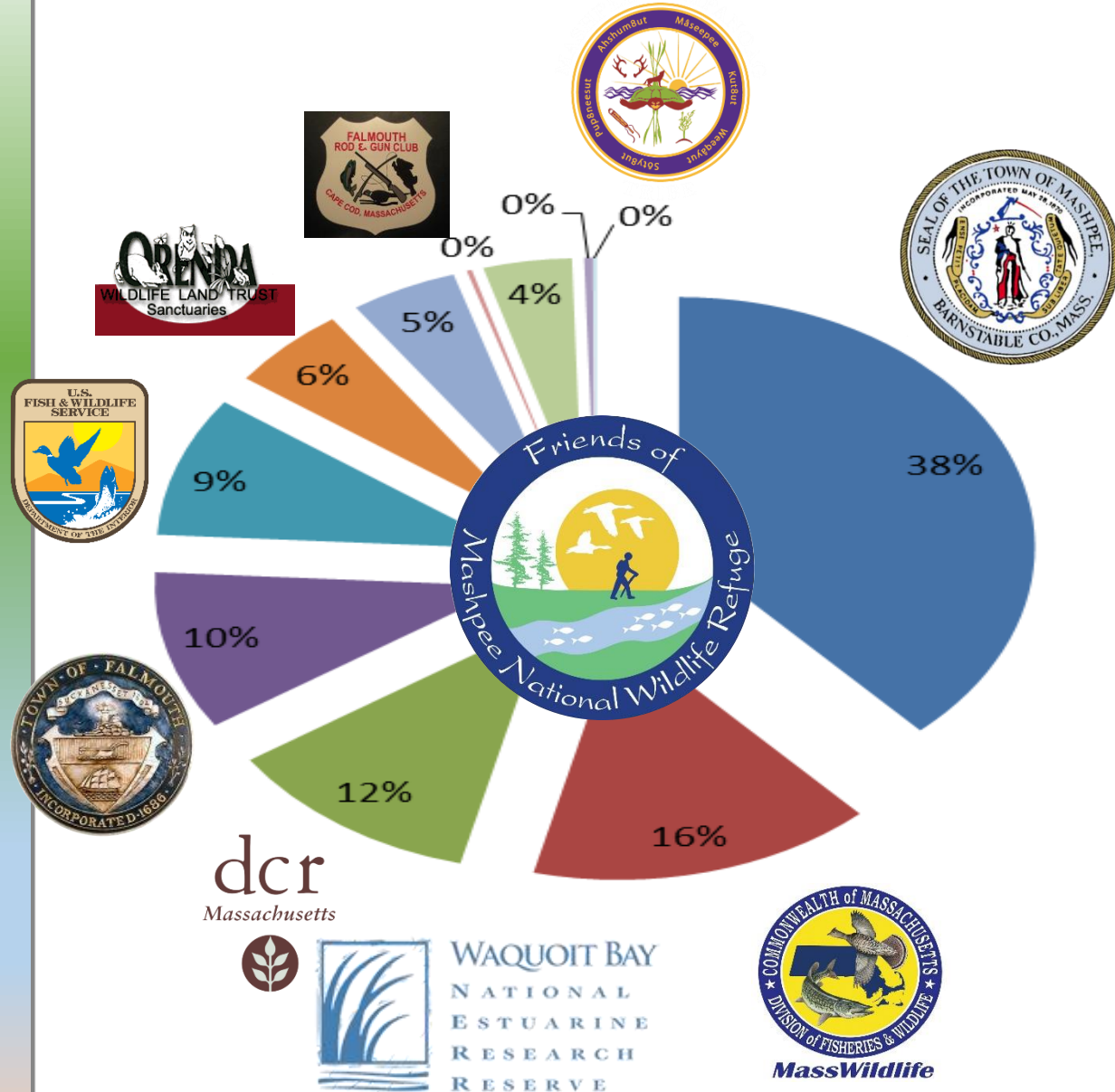


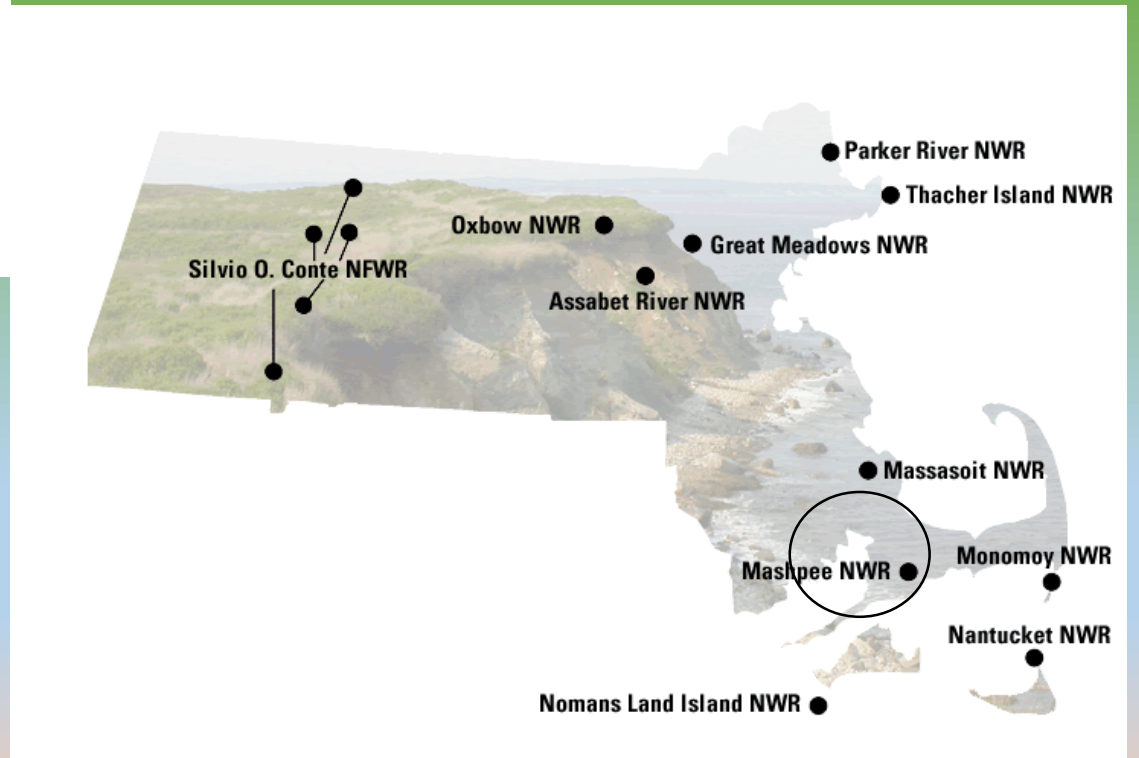
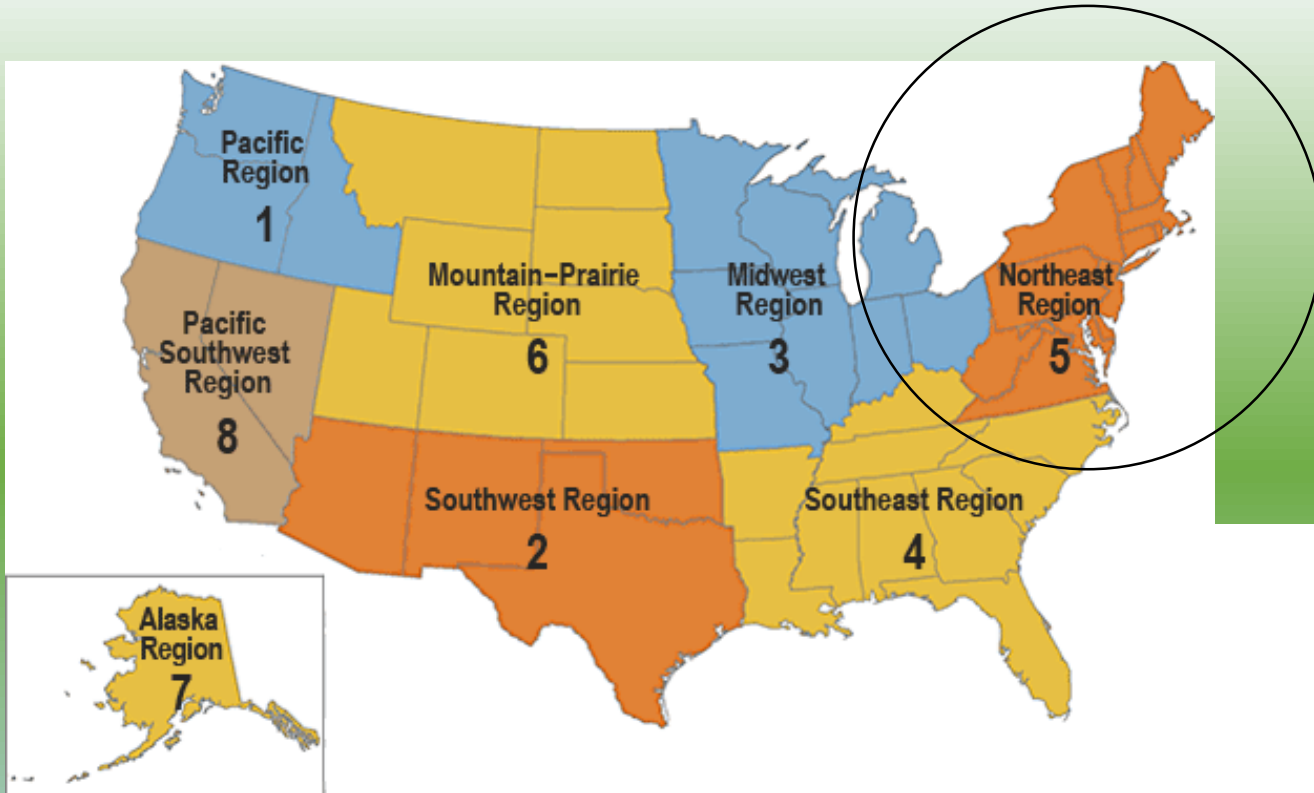


Waquoit Bay NERR/DCR



# Partner acreage & Percent ownership

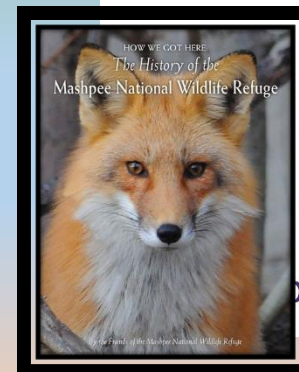
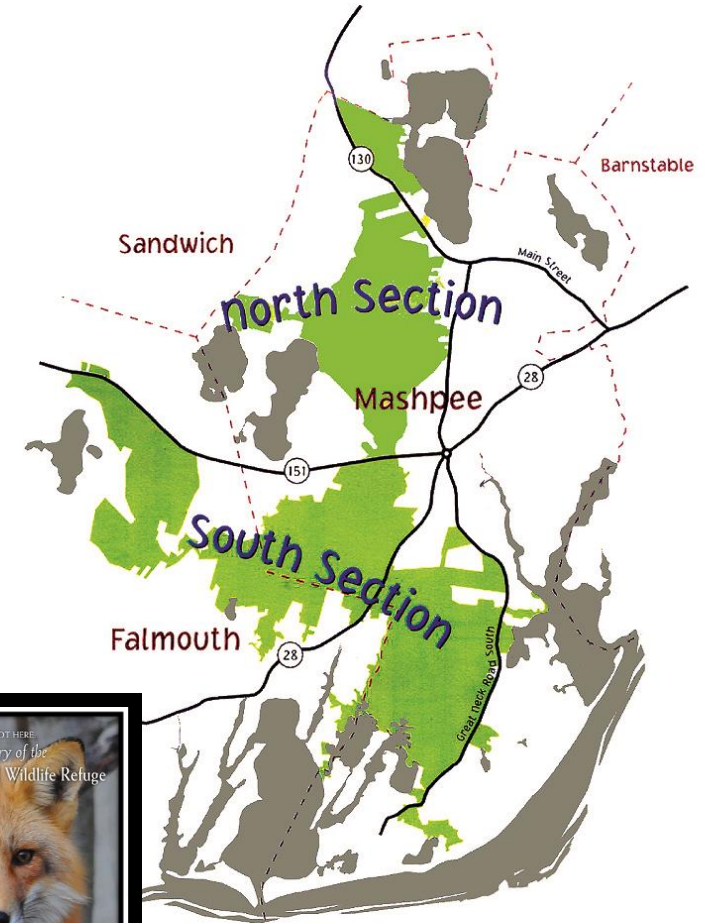




# CONNECTED HABITAT IS KEY!

- The only possibility of this connection is through partnerships, not only USFWS-owned land
- WILDLIFE CORRIDOR ALLOWS FOR REFUGE DESIGNATION

## Mashpee National Wildlife Refuge



compassing a total 5,871 acres.

*"This was the right project, at the right time, in the right place, with the right people." –pg. 13 "How We Got Here": The History of the MWNR*





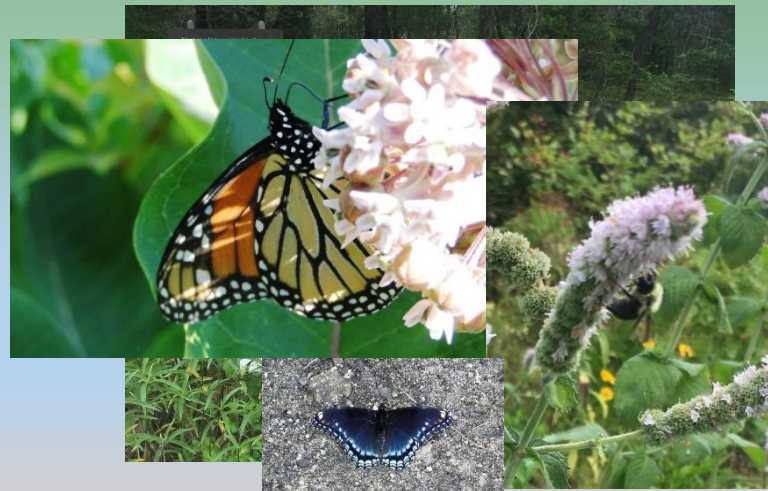
Pine Barrens



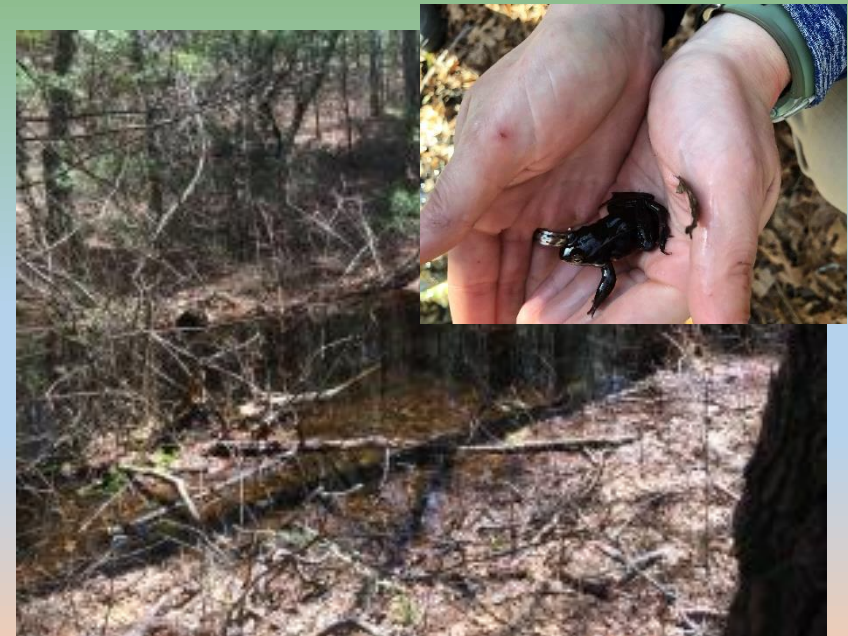
Vernal Pools, Ponds



Pollinator Gardens



Pitch Pine/Scrub Oak Forests





Atlantic White Cedar Swamps



Estuaries (salt marsh)

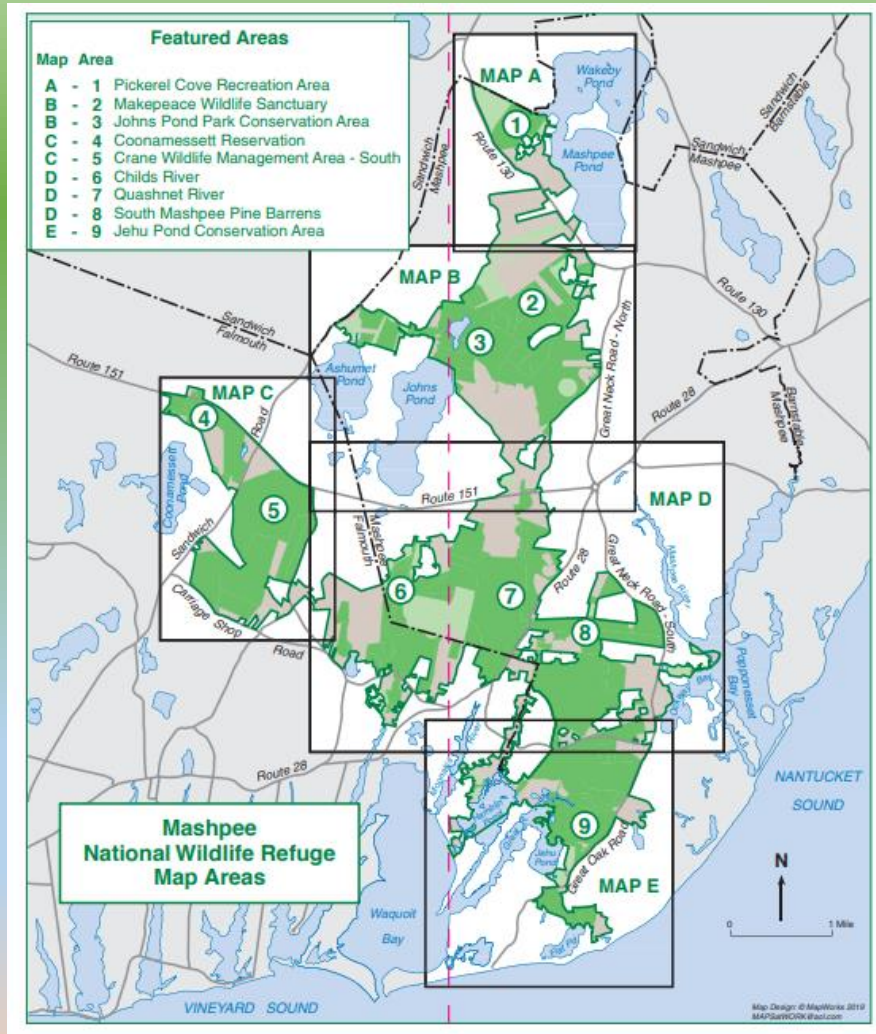


Rivers

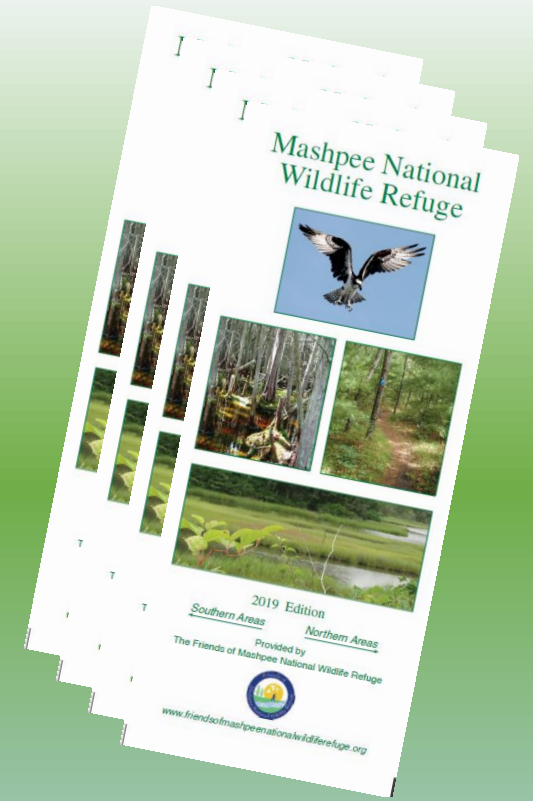


Pine Barrens

# Areas in the Refuge



- Pickerel Cove
- Makepeace
- Johns Pond
- Coonamessett
- Crane
- Childs River
- Pine Barrens
- Jehu Pond



FRIENDS  
UPDATES:  
PROJECTS,  
OUTREACH

# New Board Members!



***Joan W. Barkin: Director, Membership Committee***

*Joan is a retired M.D. who practiced pediatric and adolescent medicine for 45+ years in Massachusetts and then Maryland. She is an avid gardener who maintained a 2-acre garden including perennials, wildflowers, native and flowering trees, as well as an array of vegetables. Prior to moving to Mashpee with her husband 2 years ago she was a Board member of the Friends of Historic Great Falls Tavern in Potomac, MD, an organization that coordinated with the National Park Service in maintaining and supporting a section of the 184 ¼ mile C&O Canal. Besides gardening, her hobbies include history, kayaking, bicycling, book club, and travel with friends and family. Four grandchildren keep her*

*involved.*

***Neil J. Barkin: Director, Membership Committee***

*Neil is a retired orthopaedic surgeon who practiced first in Gloucester, MA then, for the past 40 years in the Washington D.C. suburbs specializing in joint replacement and sports medicine. For over 35 years he has enjoyed vacationing with his wife and children at their vacation home in Mashpee and then upon semi-retiring he relocated to Mashpee full time. He enjoys the outdoors utilizing the 4 distinct seasons to enjoy sailing, tennis, kayaking, hiking, bicycling, and swimming. Along with his wife, Joan, he is pleased to be able to contribute to the Friends of Mashpee National Wildlife Refuge as a replacement to his Board involvement with the Friends of the Historic Great Falls Tavern, also working with the National Park Service along the C&O Canal in Potomac, MD.*





Joan Muller, new member of the Board  
WBNERR Education Coordinator

Emilie Brush, our 2021 AmeriCorps Individual Placement



# OSPREYS NESTS

# OSPREY NEST CAMERA

## Partners: WBNERR



EmPower IP Camera Series

UNISIGHT

◆ IP-2PT-6IZ30A ◆

2MP 30× Starlight IR PTZ Network Camera

**Features**

- ◆ 1/2.8" 2Megapixel STARVIS™ CMOS
- ◆ Powerful 30x optical zoom
- ◆ Starlight technology
- ◆ Max. 50/60fps@1080P
- ◆ Auto-tracking and IVS
- ◆ IR distance up to 200m
- ◆ PoE+, IP67, IK10

**System Overview**

Featuring powerful optical zoom and accurate pan/tilt/zoom performance, this camera can provide large monitoring range and great detail. The camera has very excellent low light performance due to adopting the latest starlight technology. The camera is equipped with smooth control, high



H.265	WDR
10.005lux	ICR D/N
IP67	PoE+
Vandalproof	

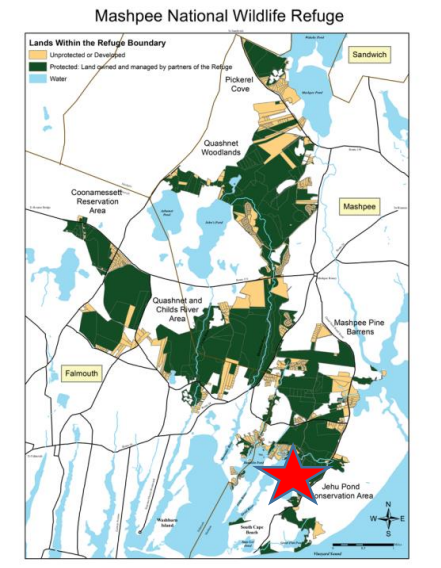




# OSPREY NEST INSTALLATION



# OSPREY NEST REPAIR

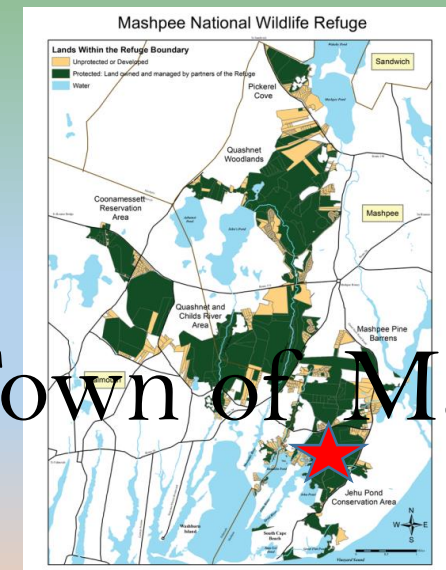


# POLLINATOR GARDENS

# PRESERVE OUR HOMELAND CAMP

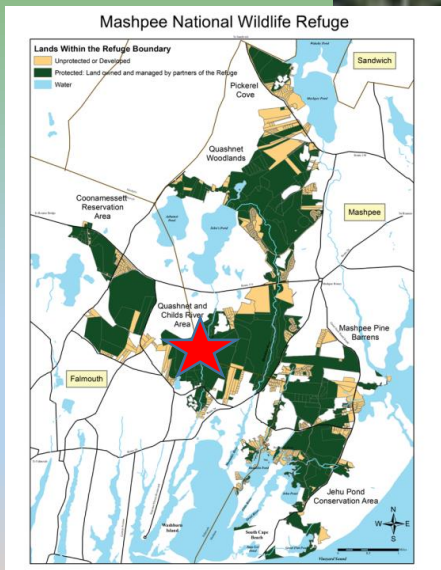


# NEW POLLINATOR GARDEN/TRAIL HEAD IMPROVEMENTS



Partners: Town of Mashpee,  
USFWS

# CHILDS RIVER POLLINATOR GARDEN PLANTING



Partners: Falmouth Rod and  
Gub Club

OUTREACH

## Biology



- NEC are far less likely to stray more than 15 feet from cover
- Adults live solitary lives except to mate and, in the doe's case, rear young
- On average, 15% survive their first year
- Average life expectancy is 15 months
- Average litter size of 3-8, 2-4 litters per year, 28 day pregnancy
- Doe makes shallow nest by scratching 4 inch divot in ground and lining with fur and dried grass and twigs
- Eat their own fecal pellets to more completely digest food (this is called coprophagy)
- Nearly indistinguishable from the introduced Eastern Cottontail



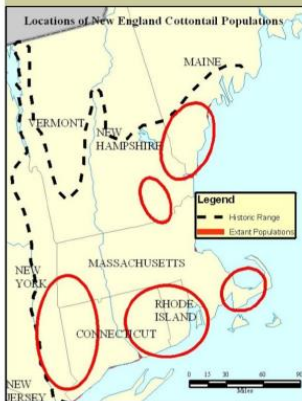
A litter of New England Cottontail kits in a nest constructed by the mother. They will be raised by the mother for 4-5 weeks.

(Photo credit: "Working Together for the New England Cottontail")

## History

The New England cottontail (NEC) is Cape Cod's only native cottontail—the far more common Eastern cottontail was introduced in the late 19th and early 20th century to enhance game populations. Once occupying the majority of New England, today NEC populations are found in just five locations (including Cape Cod), representing only 14% of their historic range.

**The NEC needs your help.**



For more information on the New England Cottontail, visit: <https://newenglandcottontail.org/>

## Rabbit Habitat (rabbit)

Creating and Maintaining Habitat for the New England Cottontail



New England cottontail. Credit: Meagan Racey



# Working Together for the New England Cottontail

## Preferred Habitat

The New England Cottontail prefers habitat with thick shrub cover

- Forests with thick understory
- Shrublands
- Forested wetlands

This thick cover provides protection from predators like

- Owls and hawks
- Foxes and coyotes
- Domestic cats

On Cape Cod, the NEC can be found in forests of mixed pitch pine and oak with a dense understory of

- Huckleberry
- Blueberry
- Green brier

The NEC's diet consists of bark, twigs, leaves, nuts, berries, flowers, and grasses. Preferred sources of this food include raspberry, blackberry, highbush blueberry, willows, birch, and red maple.



The dense understory of a pitch pine forest like the Mashpee Pine Barrens offers excellent cover for the NEC.

## How You Can Help

Make brush piles!

Aside from managing land to provide native plants for food, the best thing you can do for the NEC is give them somewhere to hide.

Here's how you can make a rabbitat:

1. Lay down large logs in a crisscross pattern—this provides the entrances and exits for the rabbit, keep them small enough that predators won't fit



2. Pile on smaller limbs and branches



3. Pile on any loose leaves, twigs, and other plant detritus



4. Keep adding to the pile throughout the year—bigger is better



**\*\*Important note\*\***

This is how to build the *perfect* brush pile or rabbitat. One or more brush piles offer important hiding spots, which is extremely beneficial to this woodland rabbit.

The NEC requires a travel corridor of habitat (or at least hiding places) to utilize for food and shelter. Homeowners can help by creating several brush piles like this one on their property.



# RABBITAT BROCHURE

## Partners: USFWS



# MASHPEE 2021



# OKTOBERFEST

WELCOME

ABOUT OUR EVENT

CLICK T

WHERE: **Village Green in Mashpee Commons**

WHEN: SATURDAY, OCTOBER 2, 2021 from 10am - 4p

The rain date is the next day, Sunday, October 3 from 11a





## Friends of Mashpee National Wildlife Refuge Winter Newsletter 2022

### *Friends Build New Osprey Nest Platform*

In a true joint effort, the Friends of the Mashpee National Wildlife Refuge (FMNWR) assisted partner organization Waquoit Bay National Estuarine Research Reserve (WBNERR) to build and install a new osprey nest platform in the marsh behind Amy Brown Road in Mashpee. WBNERR Stewardship Coordinator, James Rassman, led the effort, assisted by FMNWR Directors MaryKay Fox and Glenn Davis, volunteer Neil Barkin, and a curious neighbor who lent the team a forgotten, but crucial wrench. Wearing boots and facemasks, the team was able to successfully build and raise the platform during a tricky high tide on March 27, 2021. The osprey is one of the iconic wildlife species on Cape Cod, and the Mashpee Refuge is fortunate to host a number of nesting pairs which raise their young each year. The Friends group supports ongoing efforts to build and repair platforms in the area, which provide safe nesting places away from utility poles, rooftops and other hazardous locations for these majestic birds.

Thanks to all who helped, as well as homeowners on Amy Brown Road who allowed us to access the site from their property. Now we wait and hope to see how quickly the new site is claimed as home by a pair of returning osprey. We'll post an update when the new platform is adopted!



# WINTER 2022 NEWSLETTER

# FUTURE WORK



# "WILD ABOUT WILDLIFE!"

June 2020 1-4pm

Hosted by the Friends of the Mashpee National Wildlife Refuge

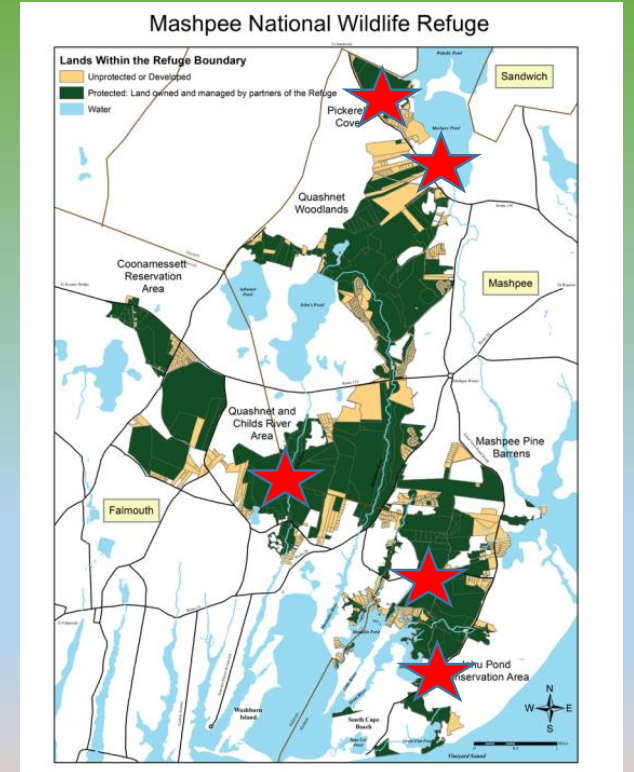
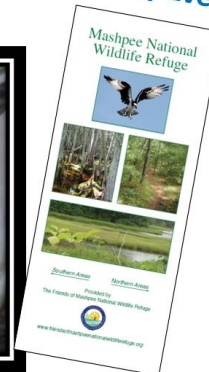
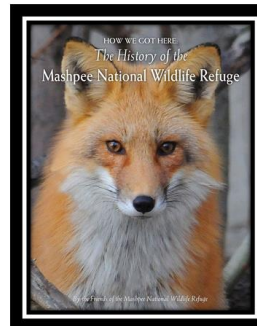
Join us at **NAUKABOUT MICROBREWERY** (13 Lake Avenue Mashpee, MA)

- New Friends Group Brochures
- New Trail Map Guide
- New History Book

**Family Event!**



**Educational Animal Ambassadors!**  
**Silent Raffle!**  
**Trivia!**  
**Music & Food!**



FRIENDS  
UPDATES:  
BUDGET/  
TREASURERS  
REPORT

# *Friends of MNWR 2021 Financial Report*

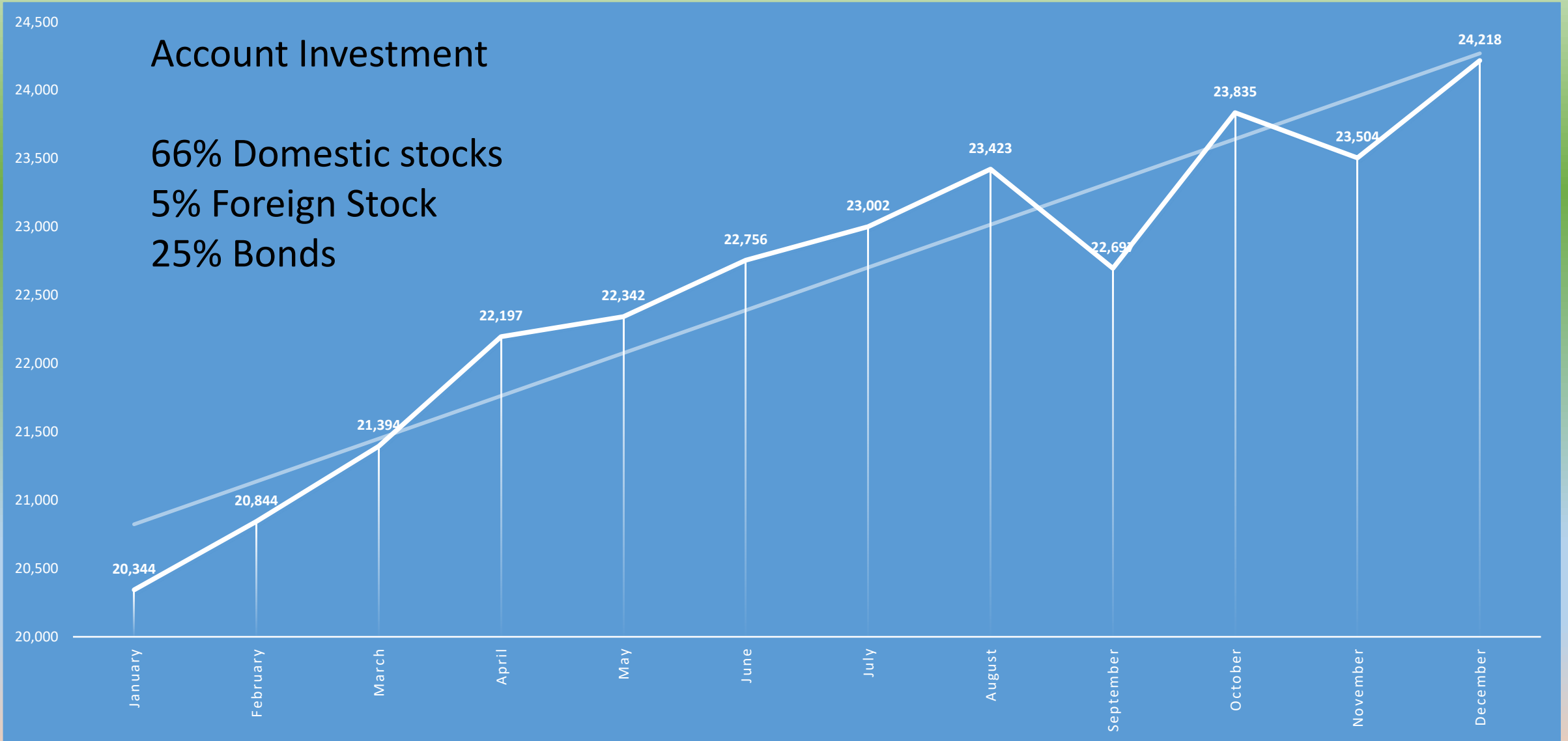
## Review

- ✓ Endowment Account (Investment Income-Fidelity.com)
- ✓ Monthly Income & Expenses (Checking Account-CC5)
- ✓ State and Federal Reporting for 501(c)3 status

# 2021 FIDELITY ENDOWMENT MONTHLY BALANCE

BEGINNING BALANCE \$20,344

ENDING BALANCE \$24,217



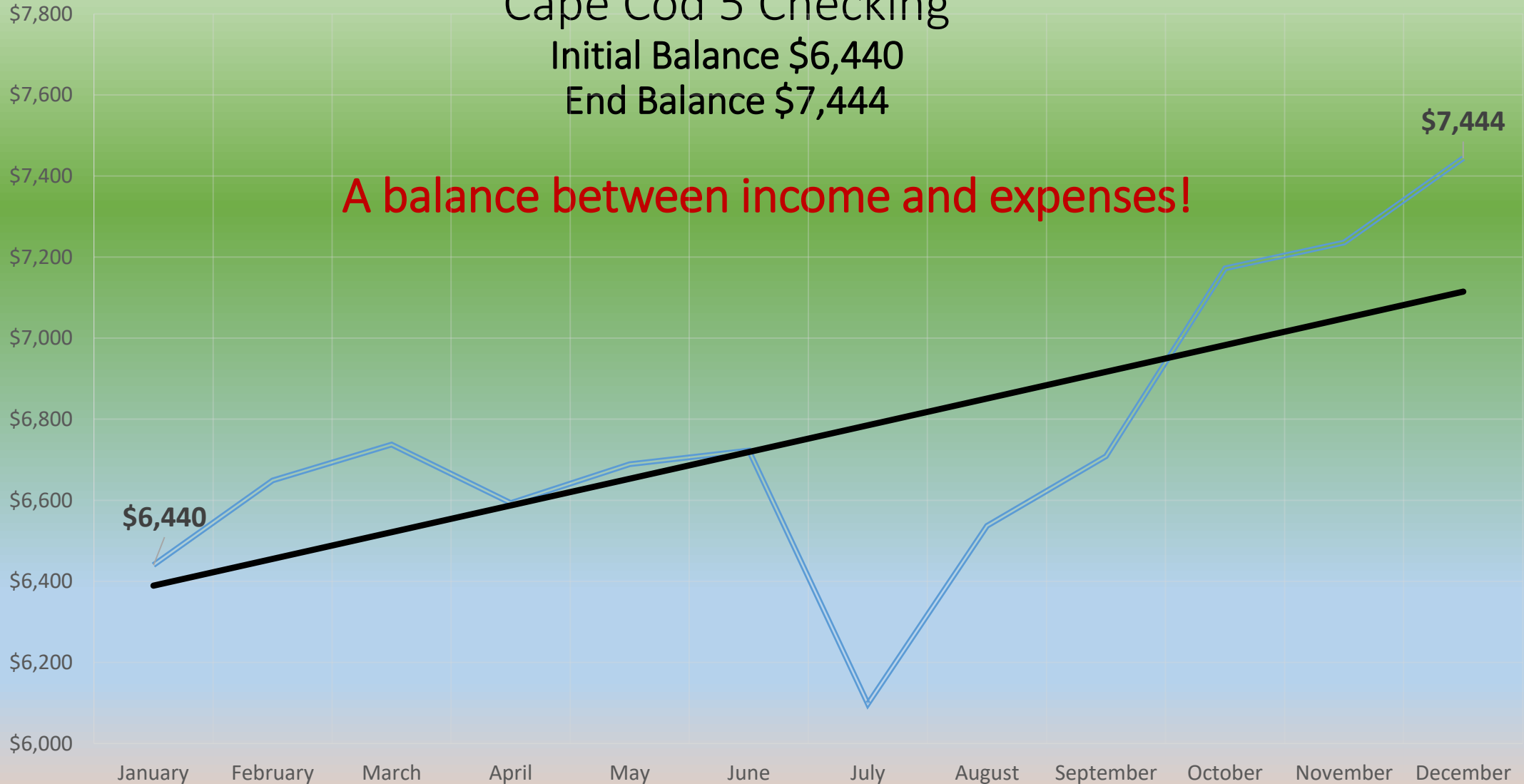
# 2021 Monthly Budget

Cape Cod 5 Checking

Initial Balance \$6,440

End Balance \$7,444

**A balance between income and expenses!**





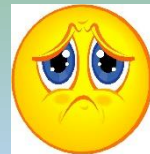
# 2021 Monthly Budget's Income is based on a mix of several sources

## *2021 list*

### *1.Memberships*

### *2.Donations Received*

- Reimbursements
- Bank Interest Income

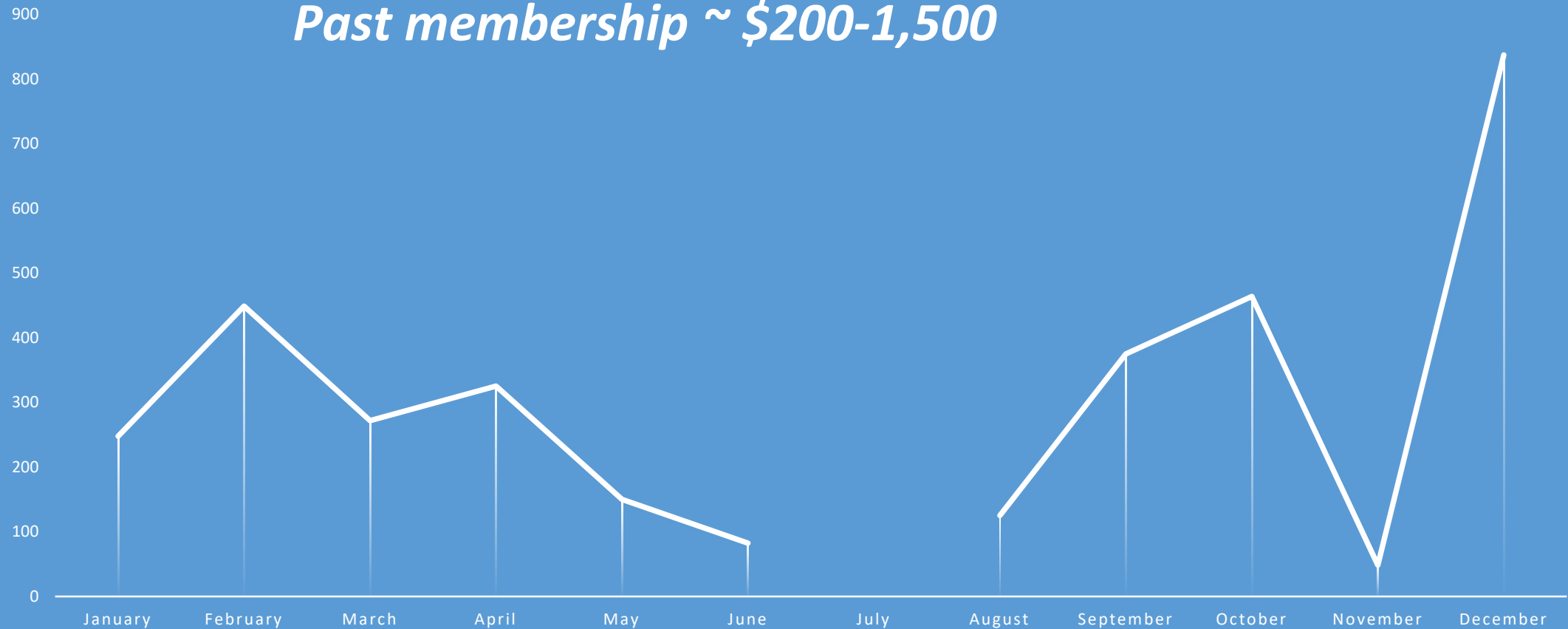


## Past income sources include

- Events
- Sales of Jams, Native Plants
- Other Merchandise Sales
- Income for Presentations
- Raffles

# 2021 Monthly Budget Income by Membership

***Membership income : \$3,461***  
***Past membership ~ \$200-1,500***



# Expenses are based on three categories:

1. Basic Operating budget needs
2. Program Services
3. Membership & Development

## Basic Operating Needs

- State Filing Fees (\$50)
- PO Box Rental (\$118)
- Website Expenses (\$132)
- Zoom meeting(\$180)

Total of \$480

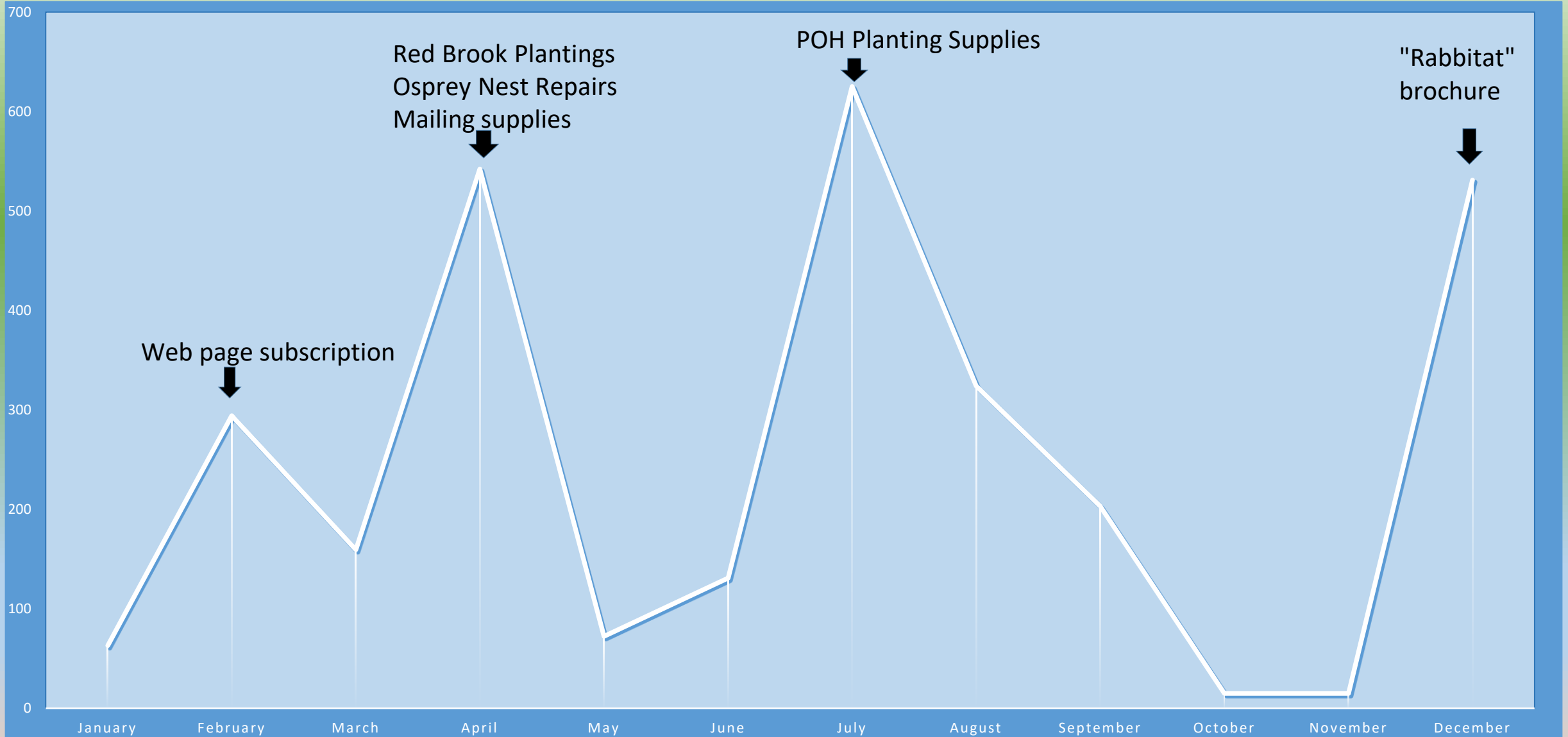
## Program Services

- Partners Meeting Supplies
- field materials, seeds
- NP Garden Supplies, Seeds
- Events
- Osprey Nest Repair

## Membership & Development

- Merchandise Purchases
- Subscriptions, Conferences, Events
- Printing, Stamps, Materials, Supplies
- Memberships (AmeriCorps, NWRA, etc.)
- Rabbitat Brochure

# 2021 Budget Expenses



# Annual State and Federal Reporting for 501(c)3 status

## STATE Reports

Annual Report to Secretary of the Commonwealth (Nov 2022)

PC Form to Attorney General of Massachusetts (April 2022)

## FEDERAL Reports

990-EZ Form (April 2022)

# Conclusion



1. The Friends have completed annual state and federal forms and have maintain a perfect record since 1995 as a 501(c)3 organization. 25 years as of 2020 *Important to be transparent and accountable!*
2. Over the last 10 years, our total income has steadily increased by 440% or 4x. This has allowing us to contribute a dedicated, public support of over \$56,000 through our outreach, advocacy, grants, and educational programs(Form PC Massachusetts).
3. This enables us, in a strong financial position, to amply pursue our mission in support of the Mashpee NWR and its partners.



*Friends of*  
Mashpee National Wildlife Refuge



FRIENDS  
UPDATES:  
MEMBERSHIP  
COMMITTEE

# FMNWR Membership Report

February 1, 2022

Data Source: Google Sheets

Total Membership: 79

Lifetime Members: 12

Membership Payments/year:

2019: 11 payments, \$1200

2020: 12 payments, \$1550

2021: 42 payments, \$3152.52

2022: 4 payments, \$650

Breakdown of 2021:

28 first time members out of 42 paying members and 12 lifetime members



ELECTING  
NEW  
OFFICERS

- PRESIDENT
- VICE PRESIDENT
- CLERK
- TREASURER

GOALS  
FOR  
NEXT YEAR